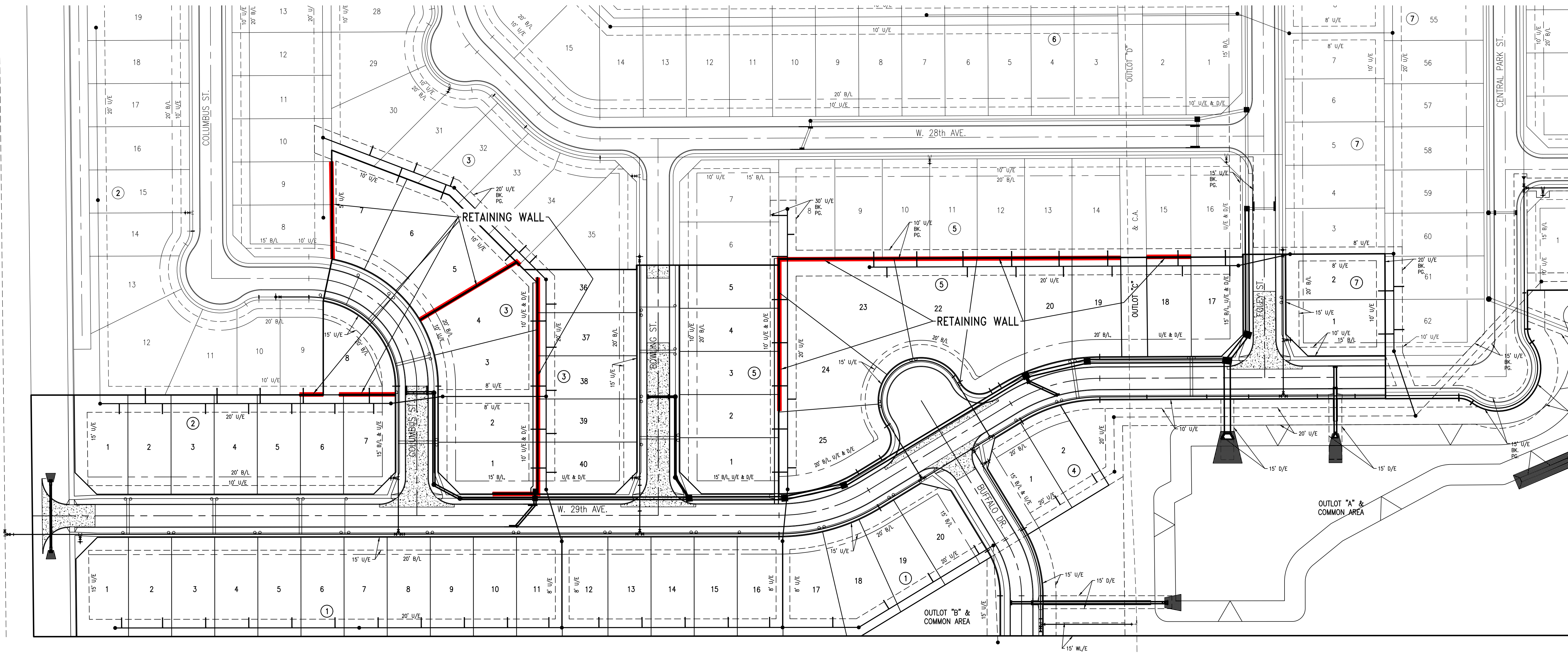
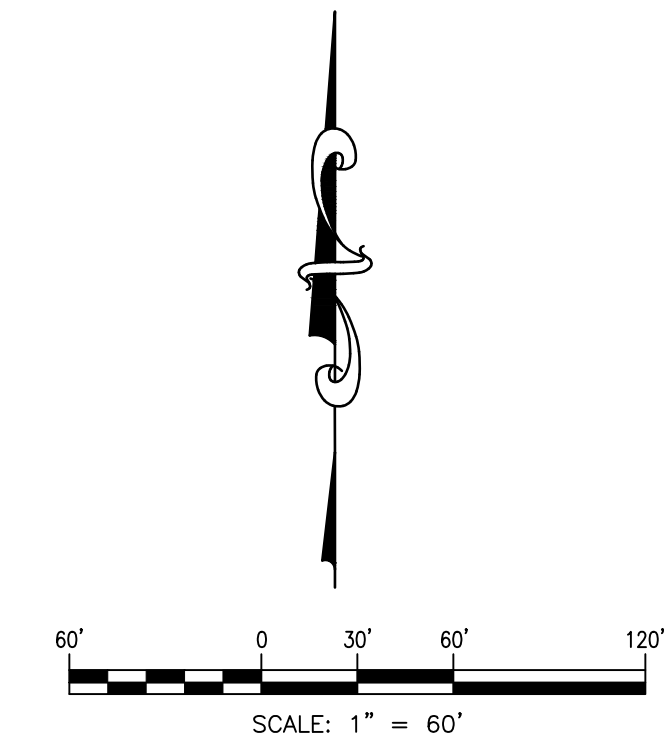
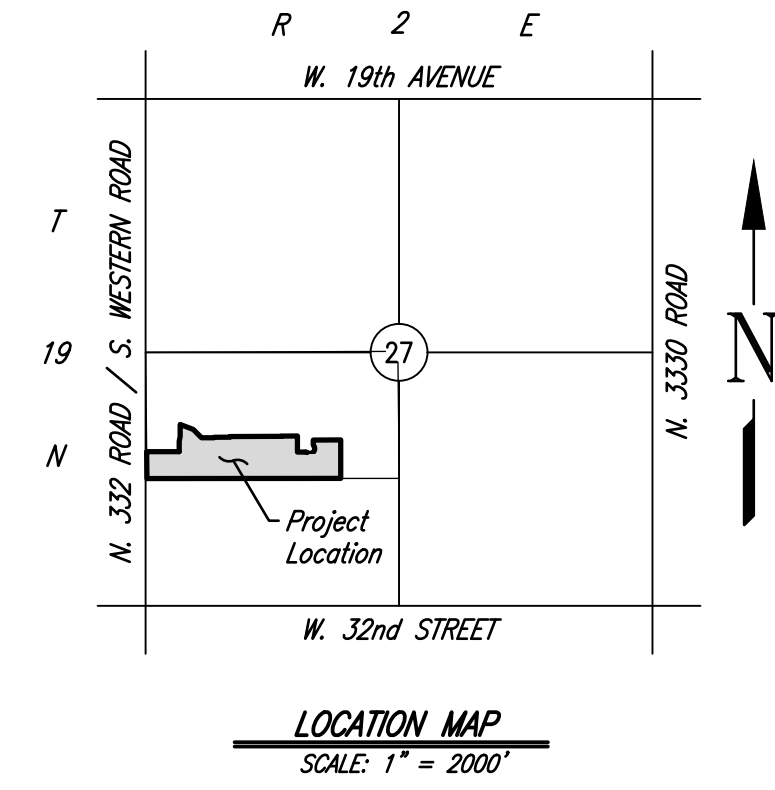


RETAINING WALL EXHIBIT
PARK VALLEY ADDITION
 A PART OF THE S.W. 1/4 OF SECTION 27, T19N, R2E, I.M.
 STILLWATER, PAYNE COUNTY, OKLAHOMA



© SMC CONSULTING ENGINEERS, P.C. ALL RIGHTS RESERVED THESE DOCUMENTS MAY NOT BE USED FOR ANY PURPOSES WITHOUT PRIOR WRITTEN PERMISSION FROM SMC CONSULTING ENGINEERS, P.C.

PARK VALLEY SECTION 1
S. WESTERN RD. & W. 32nd ST.
STILLWATER, OKLAHOMA

SMC
 Consulting Engineers, P.C.
 601 N. Lincoln
 Stillwater, OK 74060
 PH: 405-232-7715 Fax: 405-232-7639
 Website: www.smcok.com

OKLAHOMA CERTIFICATE OF AUTHORIZATION NO. CA 464 EXP. 09/20/2023

No.	Revision	Date

PROJECT NO.: 6341.01
 DATE: 8/28/21
 SCALE: 1" = 60'
 DRAWN BY: DG
 ENGINEER:
 P.E. NUMBER:

Retaining Wall Exhibit

SHEET NO.
1

Exhibit "A"

\\LDS05\ENR\PROJECTS\PARK VALLEY SECTION 1\EXHIBIT 01 - RETAINING WALL EXHIBIT.DWG
 Plotted by: Corey Griffin @ 8/22/2023 1:04 PM